



LOOKBOOK
AUTUMN/WINTER 2026

MELA



Our **Autumn/Winter 2026 collection, Like Water**, combines clear product strength with a calm, modern atmosphere. Inspired by the essence of water—fluid, changeable, full of life—it features a color palette that is versatile in retail and instantly recognizable: from fresh sea blue to soft stone shades to rich forest tones. Delicate shades and vibrant accents meet natural fabric textures to create a harmonious, timeless overall look.

The focus is on **high-quality knit styles**: our proven bestsellers and new, effortlessly elegant models for everyday wear. Matching knit accessories and socks complete the looks. A special highlight is the **Artist Edition by Cristóbal Schmal** – profound black-and-white prints with poetic nature motifs that really catch the eye.

Equally important: **genuine product development**. With our new quilted bags Paveen and Vinusa, we are taking another step towards circular sustainability. Thanks to the **100% cotton padding** – instead of the standard EVA foam – both models are recyclable. This is visible progress that shows how consistently we are rethinking our products to bring ecological solutions into the everyday lives of our customers.

While other brands are lowering their sustainability standards, we continue to take a clear stance with our fair, transparent, and resource-efficient production—ensured by our **triple certification**. For you, this means **maximum product safety, clear communication advantages**, and an **attractive price-performance** ratio that pays off in sales.

For greater flexibility in retail, we continue to refrain from displaying prices on products. The **margin on pre-orders** is **2.7** for the entire **textile collection**, including **accessories, backpacks, and bags**. We offer a **margin of 2.2 on socks**.

Discover the new collection live: in **January and February 2026** in our **showrooms in Kassel, Berlin, Düsseldorf, and Leipzig, or at Innatex**. We look forward to the **Autumn/Winter 2026 pre-order season**—and to working together to create fashion that is responsible, predictable, and inspires customers.

LIKE WATER



Fine Knit Beanie **Style HIMMAT**
 Rib Tank Top **Style DRISNA**
 Rib Turtleneck Longsleeve **Style MUNLI**
 Rib Knit Troyer **Style KIMAYA**
 Rib Knit Scarf **Style NAGNA**

Rib Knit Troyer **Style UDAI**
 Rib Knit Turtleneck Jumper **Style CHIRHA**



SHOWROOMS & TRADE FAIRS

Showroom Kassel
22.01.-10.02.26

Showroom Berlin
05.-07.01.26

Showroom Leipzig
07.-09.01.26

Showroom Düsseldorf
13.-15.01.26

Innatex (bei Frankfurt a.M.)
16.-19.01.26

OUR CONDITIONS

- **Pre-order deadline** is **February 10, 2026** via Excel order sheet.
- A **2.7 margin** on the entire **textile collection** in the pre-order.
- Attractive **2.7 margin** on **accessories, textiles, backpacks, and bags** in the pre-order.
- Attractive **2.2 margin** on **socks** in the pre-order.
- **Minimum order value** for collection items: **€1,500 net.**

YOUR B2B TEAM



Christina
+49 155 6308 4021
sales@melawear.de

Geoffrey
+49 155 607 834 28
geoffrey@melawear.de

Jonas
On parental leave
until March 13, 2026



scan me



Rib Knit Troyer **Style KIMAYA**

CERTIFICATIONS

MELA is Hindi and stands for
acting together.

All of our products are
**100% Fairtrade Cotton, GOTS &
Green Button** certified.

Just as water connects everything, our collaboration combines style, comfort, and sustainability in every garment. Our partners manufacture them under fair conditions and using resource-saving processes that conserve water and energy, reduce waste, and minimize the ecological footprint. A collaboration that not only embraces the harmony between people and nature, but also consciously protects it.



The Fairtrade Cotton Standard certifies 100% Fairtrade cotton products while ensuring a transparent supply chain up to the respective cotton field. Among other benefits, it guarantees a fixed minimum price for cotton farmers and compliance with social and environmental standards. Additionally, cooperatives receive a Fairtrade Premium, which is invested in joint projects.



The Global Organic Textile Standard (GOTS) is the world's leading certification for processing textiles made from organically grown natural fibers. It sets strict environmental requirements throughout the entire textile production chain while also ensuring compliance with social standards. All MELA products are GOTS-certified and made from 100% organic cotton from India.



The Green Button is the first German government-run label that sets requirements for both textile production and corporate due diligence. To earn certification, companies must meet 46 strict criteria—20 focused on corporate responsibility and 26 on social and environmental product standards. All MELA products are certified with the Green Button.



WOMEN TOPS & T-SHIRTS

STYLE KHIRA	S. 12
STYLE TANIKA	S. 13
STYLE LANISHA	S. 14
STYLE MADHU	S. 15
STYLE ANCHAL	S. 16
STYLE DHIVYA	S. 17
NEW STYLE SANGHEETHA	S. 18
STYLE AASTHA	S. 20
STYLE JASLEEN	S. 21
STYLE DRISNA	S. 22
STYLE MEHAR	S. 23
NEW STYLE MUNLI	S. 24

NOT JUST A BASIC T-SHIRT

Discover your favorite fit! With us, you won't just find a T-shirt, but the T-shirt that's made just for you. The perfect fit for different body types and personalities. Whether casual or figure-hugging, you're guaranteed to find your signature look with us.

Neck label & care label made from 100% Fairtrade organic cotton

soft & breathable

100% Fairtrade organic cotton

vegan

Triple certified

- GOTS
- Green Button
- Fairtrade Cotton Standard

recyclable



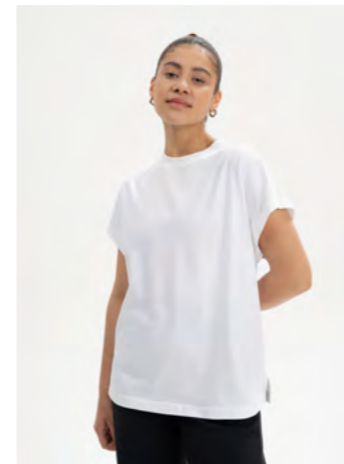
Style KHIRA

- 160GSM Single Jersey
- High round neck
- Wide Collar
- Regular fit
- Straight cut



Style TANIKA

- 160GSM Single Jersey
- Round neck
- Slightly longer sleeves
- Loose Fit
- Straight cut



Style MADHU

- 160GSM Single Jersey
- High round neck
- Batwing sleeves
- Side slits
- Loose Fit
- Straight cut



Style LANISHA

- 160GSM Single Jersey
- Round neck
- Narrow collar
- Slightly shorter sleeves
- Regular fit
- Slightly fitted waistline

**MATERIALS**

100% combed organic cotton
160GSM, Single Jersey
Pre-washed textile

SIZES

XS-XL


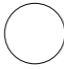




DETAILS

Round neck
Fine ribbed collar
Regular fit

PRICE

WSP **11.10€** net
RRP **29.90€** gross

COLORS

-  black
-  white
-  navy
-  bear blend
-  elderberry blend
-  cream blend

STYLE KHIRA T-SHIRT

**MATERIALS**

100% combed organic cotton
160GSM, Single Jersey
Pre-washed textile

SIZES

XS-XL

DETAILS

Round neck
Ribbed collar
Loose Fit

PRICE

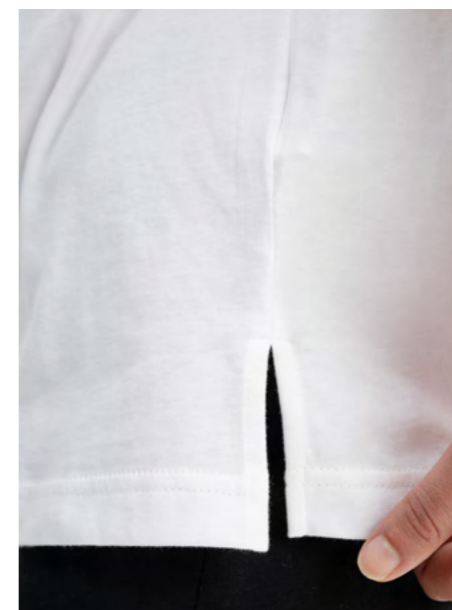
WSP **11.10€** net
RRP **29.90€** gross

COLORS

-  black
-  white
-  elderberry blend
-  bear blend

**LOOSE FIT &
LONGER
SLEEVES**

T-SHIRT **STYLE TANIKA**



MATERIALS

100% combed organic cotton
160GSM, Single Jersey
Pre-washed textile

DETAILS

Round neck
Narrow collar
Slightly fitted waistline
Regular fit



SIZES

XS-XL

PRICE

WSP **11.10€** net
RRP **29.90€** gross

COLORS



black



white



navy

STYLE LANISHA T-SHIRT

MATERIALS

100% combed organic cotton
160GSM, Single Jersey
Pre-washed textile

DETAILS

Round neck
Fine ribbed collar
Loose Fit

SIZES

XS-XL

PRICE

WSP **11.10€** net
RRP **29.90€** gross

COLORS



black



white



navy



elderberry
blend

T-SHIRT STYLE MADHU



MATERIALS

100% combed organic cotton
 160GSM, Single Jersey
 Pre-washed textile

DETAILS

Turtleneck
 Figure hugging fit

SIZES

XS-XL

PRICE

WSP **14.80€** net
 RRP **39.90€** gross

COLORS



black



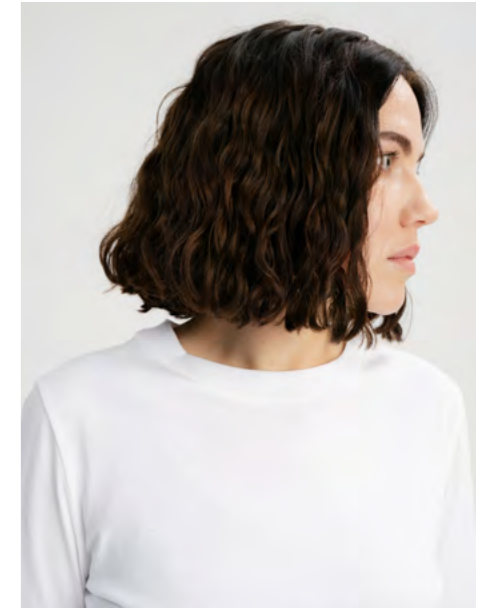
navy



elderberry
blend

STYLE ANCHAL

TURTLENECK SHIRT



MATERIALS

100% combed organic cotton
 160GSM, Single Jersey
 Pre-washed textile

DETAILS

Round neck
 Fine ribbed collar
 Regular fit

SIZES

XS-XL

PRICE

WSP **12.90€** net
 RRP **34.90€** gross

COLORS



black



white



navy



bear
blend

BASIC LONGSLEEVED SHIRT

STYLE DHIVYA



STYLE SANGEETHA OVERSIZED LONGSLEEVE HEAVY



MATERIALS

100% combed organic cotton
260GSM, Heavy Jersey
Pre-washed textile

SIZES

XS-XL

DETAILS

Ribbed Round neck
Overcut shoulders and wide sleeves
Side slits
Oversized fit

PRICE

WSP **18.50€** net
RRP **49.90€** gross

COLORS



black



navy / birch stripes



navy

NEW

**MATERIALS**

100% combed organic cotton
260GSM, Heavy Jersey
Pre-washed textile

SIZES

XS-XL

COLORS

black



white



navy



birch

DETAILS

Round neck
Ribbed collar and ribbed cuffs
Regular fit

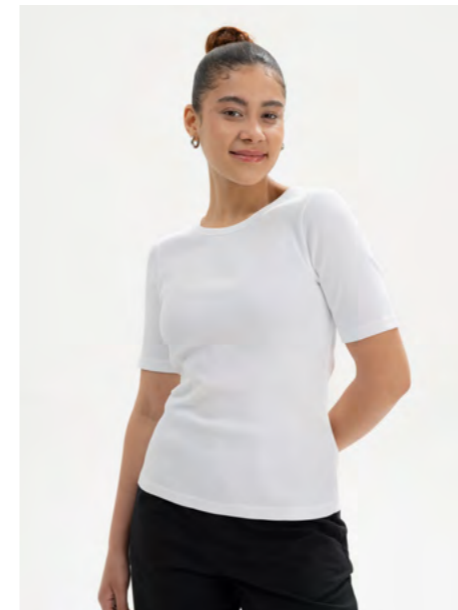
PRICE

WSP **18.50€** net
RRP **49.90€** gross

**HEAVY
JERSEY
260GSM**

STYLE AASTHA

LONGSLEEVED SHIRT HEAVY

**MATERIALS**

100% combed organic cotton
2x2 Rib, 280GSM
Pre-washed textile

SIZES

XS-XL

COLORS

black



white



pebble
blend



golden
green

DETAILS

Round neck
Short sleeves
Bound neckline
Figure hugging fit

PRICE

WSP **14.80€** net
RRP **39.90€** gross

**2X2 RIB
WITHOUT
ELASTANE**

RIBBED T-SHIRT

STYLE JASLEEN

**MATERIALS**

100% combed organic cotton
2x2 Rib, 280GSM
Pre-washed textile

DETAILS

Round neck
Sleeveless
Bound neckline and armholes
Figure hugging fit

SIZES

XS-XL

PRICE

WSP **12.90€** net
RRP **34.90€** gross

COLORS

black



white



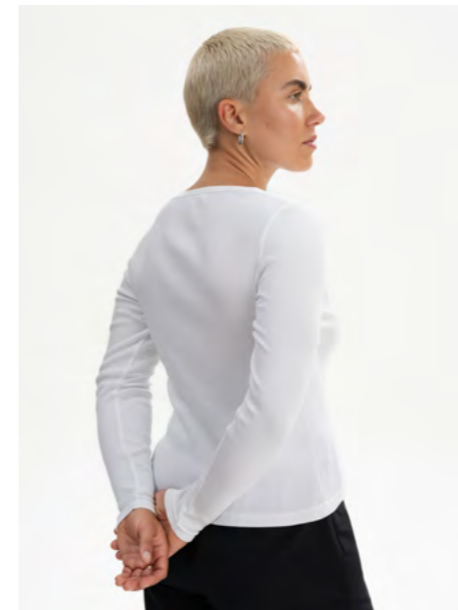
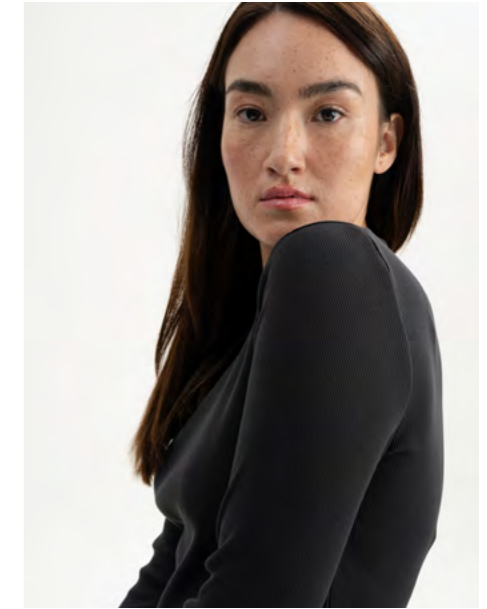
pebble
blend



golden
green

2X2 RIB
WITHOUT
ELASTANE

STYLE DRISNA RIBBED TANKTOP

**MATERIALS**

100% combed organic cotton
2x2 Rib, 280GSM
Pre-washed textile

DETAILS

Round neck
Bound neckline
Figure hugging fit

SIZES

XS-XL

PRICE

WSP **18.50€** net
RRP **49.90€** gross

COLORS

black



white



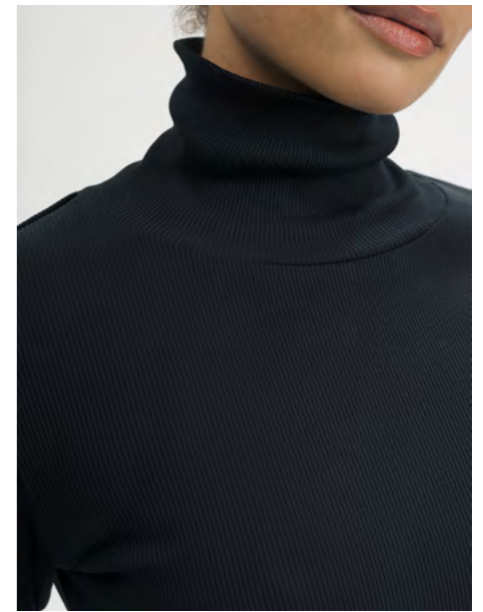
pebble
blend



golden
green

2X2 RIB
WITHOUT
ELASTANE

RIBBED LONGSLEEVE **STYLE MEHAR**

**MATERIALS**

100% combed organic cotton
2x2 Rib, 280GSM
Pre-washed textile

SIZES

XS-XL

COLORS

black



pebble
blend



golden
green

DETAILS

Turtleneck
Long sleeves
Figure hugging fit

PRICE

WSP **18.50€** net
RRP **49.90€** gross

2X2 RIB
WITHOUT
ELASTANE



WOMEN

KNIT

STYLE ADAH	S. 28
STYLE ADAH STRIPES	S. 29
NEW STYLE SURIYA	S. 30
STYLE SAMAIRA	S. 32
STYLE CHIRHA	S. 33
NEW STYLE GHEETHA	S. 34
STYLE DHANA	S. 36
STYLE MAYURA	S. 37
STYLE NAMARI	S. 38
STYLE NAMEEN	S. 40
STYLE BHUMA	S. 41
STYLE KIMAYA	S. 42
STYLE KAMUKA	S. 43
NEW STYLE BHOJA	S. 44
NEW STYLE JANISHA	S. 46
NEW STYLE ARUNIKA	S. 48

**MATERIALS**

100% combed organic cotton
Rib Knit, 7gg
Pre-washed textile

DETAILS

Round neck
Ribbed collar, cuffs and hem
Relaxed fit






SIZES

XS-XL

PRICE

WSP **37.00€** net
RRP **99.90€** gross

COLORS

-  black
-  cream blend
-  seaweed
-  deep forest blend
-  black pepper speckles

STYLE ADAH RIB KNIT JUMPER

**MATERIALS**

100% combed organic cotton
Rib Knit, 7gg
Pre-washed textile

DETAILS

Round neck
Ribbed collar, cuffs and hem
Relaxed fit



SIZES

XS-XL

PRICE

WSP **37.00€** net
RRP **99.90€** gross

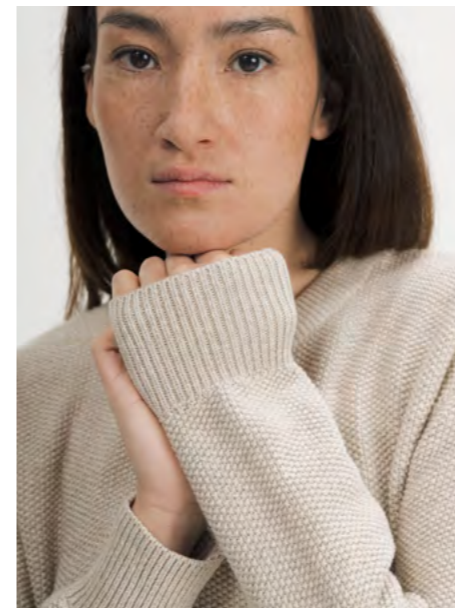
COLORS

-  salty blue stripes
-  seaweed stripes

RIB KNIT JUMPER **STYLE ADAH STRIPES**

NEW

**PEARL KNIT
STRUCTURE**



MATERIALS

100% combed organic cotton
Perl Knit, 7gg
Pre-washed textile

SIZES

XS-XL





DETAILS

Round neck
Ribbed collar, cuffs and hem
Pearl knit structure
Regular fit

PRICE

WSP **37.00€** net
RRP **99.90€** gross

COLORS

-  black
-  brown speckles
-  cream speckles
-  elderberry blend

NEW

**MATERIALS**

100% combed organic cotton
Cable Knit, 4gg
Pre-washed textile

DETAILS

Round neck
Ribbed collar, cuffs and hem
Heavy cable knit
Loose Fit

SIZES

XS–XL

PRICE

WSP **40.70€** net
RRP **109.90€** gross

COLORS

black



cream
blend



elderberry
blend

STYLE SAMAIRA

CABLE KNIT JUMPER

**MATERIALS**

100% combed organic cotton
Rib Knit, 7gg
Pre-washed textile

DETAILS

Turtleneck
Raglan sleeves
Heavy ribbed structure,
seamless transition at cuffs
and hem
Loose Fit

COLORS

black



bear blend



seaweed



pebble blend

SIZES

XS–XL

PRICE

WSP **40.70€** net
RRP **109.90€** gross

RIB KNIT TURTLENECK JUMPER

STYLE CHIRHA

NEW

ROLLED
HEMS &
RELAXED
SLEEVES



MATERIALS

100% combed organic cotton
Medium Weight Knit, 7gg
Pre-washed textile

DETAILS

Round neck
Rolled collar, cuffs and hem
Overcut shoulders and wide sleeves
Boxy fit

SIZES

XS-XL

PRICE

WSP **33.30€** net
RRP **89.90€** gross

COLORS



black



salty blue blend

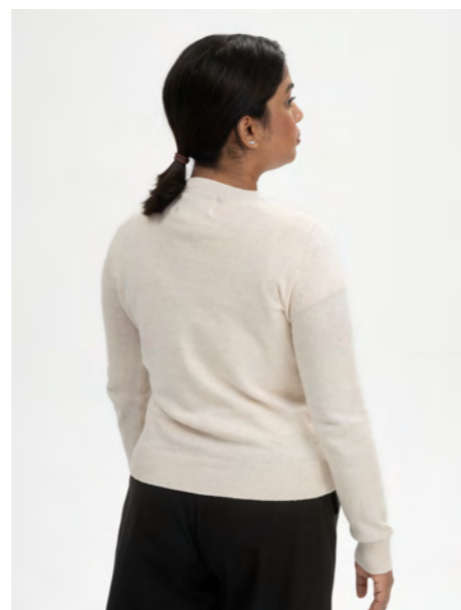


pebble blend



elderberry blend

NEW



MATERIALS

100% combed organic cotton
 Fine Knit, 12gg
 Pre-washed textile

DETAILS

Round neck
 Ribbed collar
 Ribbed cuffs
 Regular fit

SIZES

XS-XL

PRICE

WSP **29.60€** net
 RRP **79.90€** gross

COLORS



black



cream blend



bear blend

STYLE DHANA FINE KNIT JUMPER



MATERIALS

100% combed organic cotton
 Fine Knit, 12gg
 Pre-washed textile

DETAILS

Turtleneck
 Ribbed cuffs, collar and hem
 Regular fit

SIZES

XS-XL

PRICE

WSP **29.60€** net
 RRP **79.90€** gross

COLORS



black

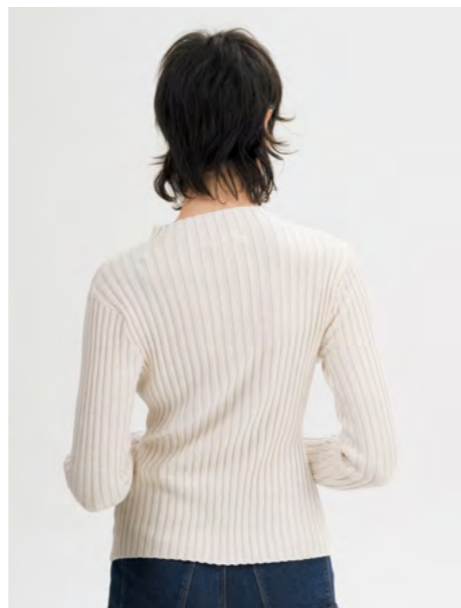


navy



pebble blend

FINE KNIT TURTLENECK JUMPER STYLE MAYURA



MATERIALS

100% combed organic cotton
Rib Knit, 14gg
Pre-washed textile

DETAILS

Mock-neck
Ribbed structure
Figure hugging fit

SIZES

XS-XL

PRICE

WSP **29.60€** net
RRP **79.90€** gross

COLORS



black



cream
blend



elderberry
blend



mixed
nature
stripes

STYLE NAMARI

KNIT JUMPER

**MATERIALS**

100% combed organic cotton
Fine Knit, 12gg
Corozo nut buttons
Pre-washed textile

SIZES

XS-XL

COLORS

black



pebble
blend



elderberry
blend

DETAILS

Round neck
Wide ribbed structure at collar and button placket
Ribbed cuffs and hem
Regular fit

PRICE

WSP **33.30€** net
RRP **89.90€** gross

STYLE NAMEEN FINE KNIT CARDIGAN

**MATERIALS**

100% combed organic cotton
Rib Knit, 7gg
Corozo nut buttons
Pre-washed textile

SIZES

XS-XL

DETAILS

V-Neck and raglan sleeves
Ribbed cuffs and hem
Varied knit structure
Loose Fit

PRICE

WSP **37.00€** net
RRP **99.90€** gross

COLORS

black



bear blend



cream blend

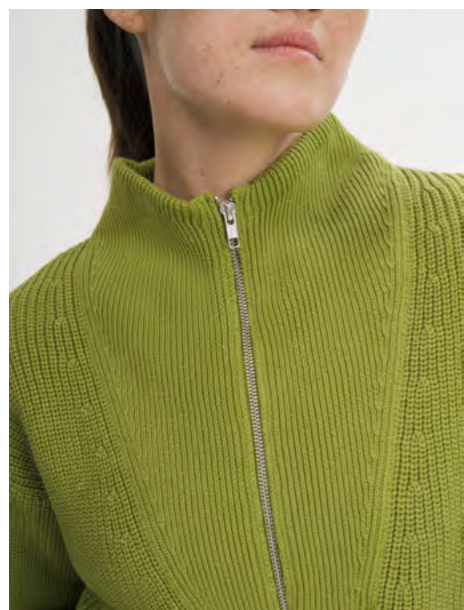


elderberry blend



seaweed

RIB KNIT CARDIGAN STYLE BHUMA






**MATERIALS**

100% combed organic cotton
Rib Knit, 7gg
YKK zipper
Pre-washed textile

DETAILS

Stand-up collar with zipper
Ribbed cuffs, collar and hem
Regular fit

COLORS

-  black
-  bear blend
-  cream blend
-  salty blue blend
-  seaweed

SIZES

XS–XL

PRICE

WSP **40.70€** net
RRP **109.90€** gross

STYLE KIMAYA RIB KNIT TROYER

**MATERIALS**

100% combed organic cotton
Rib Knit, 7gg
YKK zipper
Pre-washed textile

DETAILS

High stand-up collar
Ribbed cuffs, collar and hem
Regular fit




SIZES

XS–XL

PRICE

WSP **40.70€** net
RRP **109.90€** gross

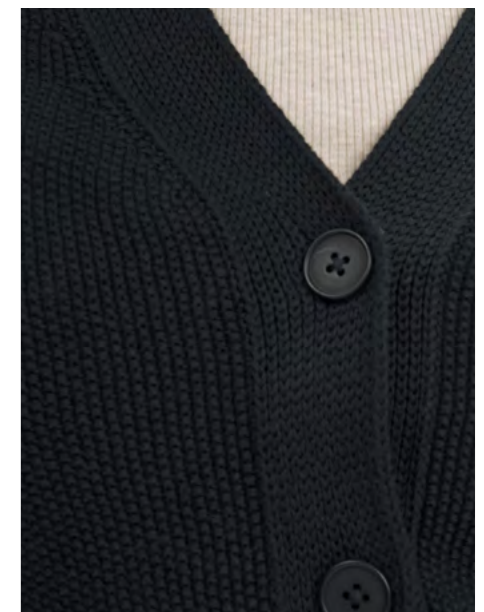
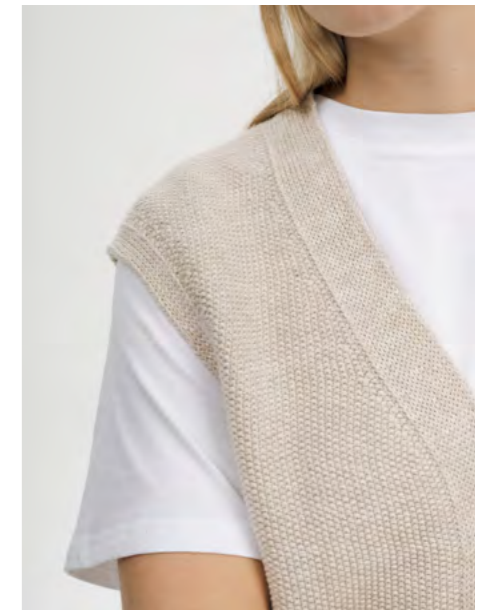
COLORS

-  black
-  navy
-  pebble blend

RIB KNIT ZIP JACKET **STYLE KAMUKA**

NEW

LAYERING
PIECE WITH
PEARL KNIT
STRUCTURE



MATERIALS

100% combed organic cotton
Pearl Knit, 12gg
Corozo nut buttons
Pre-washed textile

DETAILS

V-Neck
Button placket
Regular fit

SIZES

XS-XL

PRICE

WSP **29.60€** net
RRP **79.90€** gross

COLORS



black



cream speckles

NEW

SOFT &
DENSE
JACQUARD
STRUCTURE







MATERIALS

100% combed organic cotton
Jacquard Knit, 12gg
Pre-washed textile

DETAILS

Hood with drawstring
Ribbed cuffs and hem
Soft double layer jacquard knit
Regular fit

COLORS

-  black
-  pebble blend
-  elderberry blend
-  salty blue blend

SIZES

XS-XL

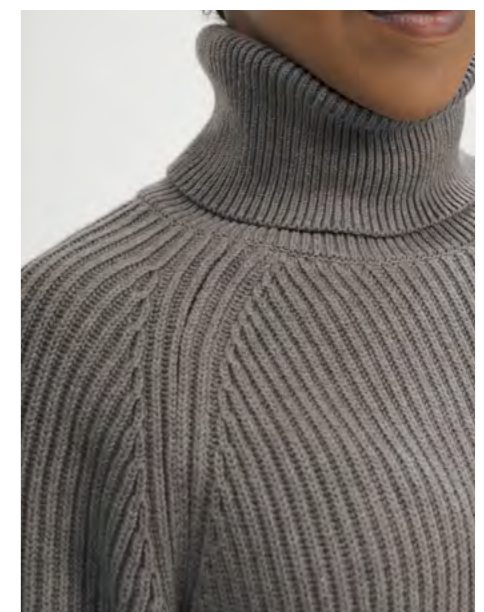
PRICE

WSP **37.00€** net
RRP **99.90€** gross

NEW



STYLE ARUNIKA RIB KNIT TURTLENECK DRESS



MATERIALS

100% combed organic cotton
Rib Knit, 7gg
Pre-washed textile

SIZES

XS-XL

COLORS



black



bear
blend



elderberry
blend

DETAILS

Turtleneck
Raglan sleeves
Heavy ribbed structure, seamless transition
at cuffs and hem
Loose Fit

PRICE

WSP **47.80€** net
RRP **129.90€** gross

NEW



WOMEN **HOSEN**

STYLE KIRANI

S. 52

RELAXED
LOUNGE PANTS
MADE FROM
260GSM
JERSEY



MATERIALS

100% combed organic cotton
260GSM, Heavy Jersey
Rubber band
Pre-washed textile

DETAILS

Elastic waistband for a comfortable fit
Two side pockets
Regular fit with straight leg

SIZES

XS-XL

PRICE

WSP **25.90€** net
RRP **69.90€** gross

COLORS



black



navy



birch



ARTIST EDITION
CRISTÓBAL SCHMAL

The MELA Artist Edition is a collaboration with selected artists.

True to our motto *Acting Together* creative people enrich our collection with their artworks.

Cristóbal Schmal

Cristóbal Schmal is a Chilean visual artist based near Frankfurt. Having lived and worked in Chile, Spain, and Germany, he has developed a visual language that feels both cosmopolitan and deeply personal. His illustrations are defined by clean shapes and muted textures, often infused with gentle wit. A collage-like aesthetic runs through his work: textured patterns, cut-paper effects, hand-drawn elements, and occasional ink or watercolor, creating a tactile quality even in digitally finished pieces. Originally trained in graphic design, Schmal spent seven years working in Barcelona studios before fully dedicating himself to illustration upon moving to Berlin in 2008. Since October 2022, he has been teaching the online course *Drawing Workout*, providing a space for reflection, experimentation, and the development of creative processes.



Cristóbal Schmal x Mela

When we first met and shared our colours and ideas for the collection, you told us that the element of water has been inspiring you for a long time. What does this element represent for you – both personally and in your artistic work?

I come from Arica, Chile – a city bordering the Pacific Ocean. The sea there is cold, dark, and wild. I spent my first 18 years in constant contact with the ocean; it is the source of my greatest joys and fears. I'm fascinated by its primordial character, by its nature as a vital element and the origin of life in its most primitive form. In my work, I think its influence and importance are clearly reflected.

In your workshops, you don't just focus on your own work, but also share inspiration from other artists and writers. Who or what inspires you personally? And what role do the different places you've lived and worked in play in that inspiration?

For me, there is no static way of creating. It's something organic and ever-changing. That's why inspiration is constantly shifting. I'm fascinated by the beginner's mindset, or by seeing the world as if you were seeing it for the first time. I'm inspired by artists whose work reflects a personal search and exploration beyond what the market dictates. I'm drawn to group or collective work and how it positively affects creative processes. There's something magical about working with more people, where a kind of shared consciousness appears and leads us down completely unexpected paths. I believe that living in different places has given me the opportunity to meet people with whom I've shared experiences or stories that stay with me forever. I think living in different realities allows you to explore your own identity. My time in Berlin was probably the most significant period; it meant a NEW beginning – learning the language, finding my way in illustration, and meeting many people with common interests.

During the process, we shifted from color to black and white: this reduction seemed to suit your motif particularly well, and you mentioned that it was originally conceived this way. What happens for you when the color disappears and only black and white remain – does it change the mood or the meaning of your work?

I love working in black and white because it has a very powerful dramatic and expressive weight. Color often offers too many options, and I get lost in choosing. Black and white, however, offers a vast complexity of mid-tones that allows for a certain degree of formal abstraction. It is, in some way, a more intuitive and playful primal state.

Thank you for letting us visit your studio! What does this space mean to you?

My studio or workspace is essential to me; it's a place where I want to spend time, sometimes doing nothing, sometimes creating something. It's where I allow myself to make things without meaning, to create without the pressure of results, to explore, to rehearse. It's similar to sketchbooks. I let myself do whatever I want without needing it to go anywhere. It's the laboratory where I spend a lot of time trying and trying.

Is there a little fun fact about yourself that you'd like to share?

Besides my Chilean nationality, I also have an Austrian passport, even though I've never lived in Austria.



NEW



MATERIALS

100% combed organic cotton
160GSM, Single Jersey
Pre-washed textile

DETAILS

Base: T-Shirt Style TANIKA
Round neck
Fine ribbed collar
Exklusive Artist Print
Loose Fit

SIZES

XS-XL

PRICE

WSP **14.80€** net
RRP **39.90€** gross

COLORS



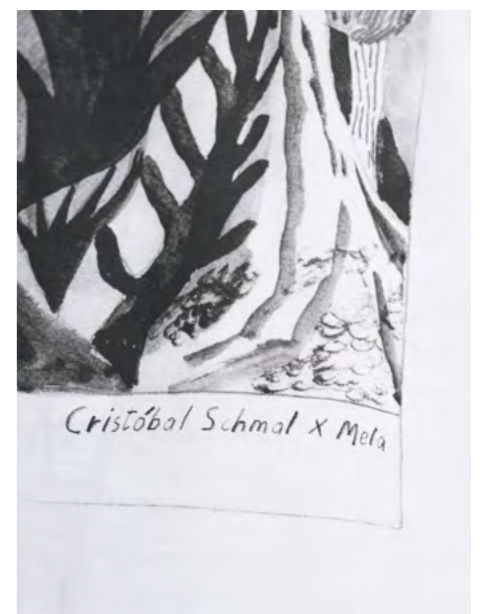
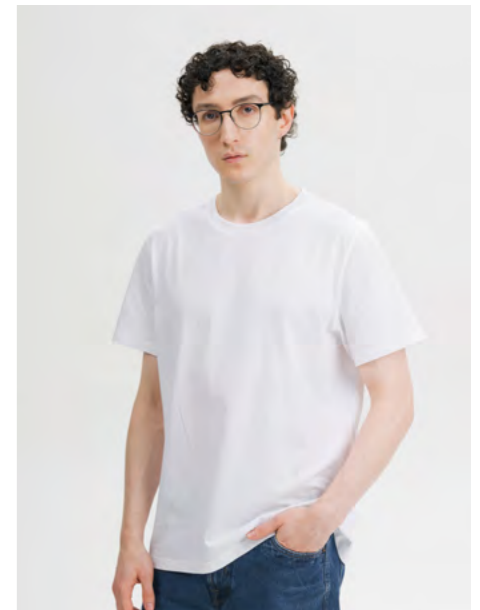
white /
print forest



white /
print ocean

NEW

NEW



MATERIALS

100% combed organic cotton
160GSM, Single Jersey
Pre-washed textile

DETAILS

Base: T-Shirt Style SADHIL
Round neck
Fine ribbed collar
Exklusive Artist Print
Loose Fit

SIZES

S-XL

PRICE

WSP **14.80€** net
RRP **39.90€** gross

COLORS



white /
print forest



white /
print ocean

NEW





MEN

TOPS & T-SHIRTS

STYLE AVAN	S. 70
STYLE IZAAN	S. 71
STYLE SADHIL	S. 72
STYLE JERIN	S. 73
STYLE BHAJAN	S. 74
STYLE PRAVIN	S. 75
STYLE TEJAS	S. 76
STYLE OSHIN	S. 77

NOT JUST A BASIC T-SHIRT

Discover your favorite fit!
We don't just offer T-shirts, we offer T-shirts that are made just for you. The perfect fit for different body types and personalities. Whether you prefer a casual or figure-hugging style, you're guaranteed to find your signature look here.

Neck label & care label made from 100% Fairtrade organic

soft & breathable

100% Fairtrade organic cotton

vegan

Triple certified

- GOTS
- Green Button
- Fairtrade Cotton Standard

recyclable



Style AVAN

- 160GSM Single Jersey
- High Round neck
- Wide collar
- Regular fit
- Straight cut



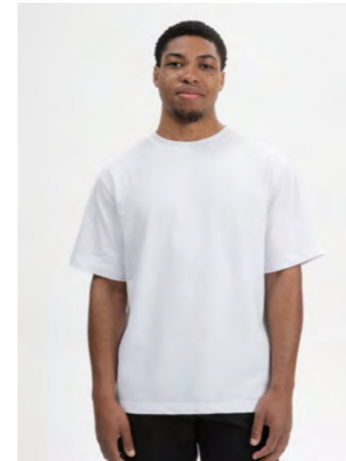
Style IZAAN

- 160GSM Single Jersey
- Round neck
- Attached collar
- Regular fit



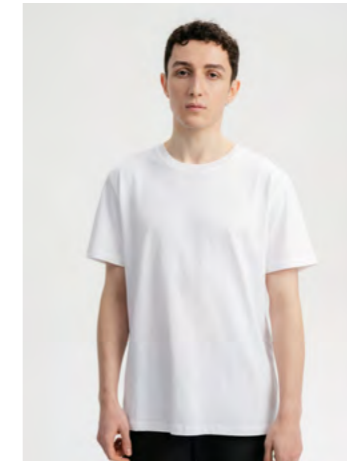
Style SADHIL

- 160GSM Single Jersey
- Round neck
- Slightly longer sleeves
- Relaxed fit
- Straight cut



Style BHAJAN

- 260GSM Heavy Jersey
- Round neck
- Overcut shoulders
- Longer sleeves
- Oversized fit
- Straight cut



Style PRAVIN

- 260GSM Heavy Jersey
- Round neck
- Slightly longer sleeves
- Relaxed fit
- Straight cut

**MATERIALS**

100% combed organic cotton
160GSM, Single Jersey
Pre-washed textile

SIZES

S-XL


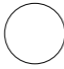




DETAILS

Round neck
Fine ribbed collar
Regular fit

PRICE

WSP **11.10€** net
RRP **29.90€** gross

COLORS

-  black
-  white
-  navy
-  bear blend
-  elderberry blend
-  cream blend

STYLE AVAN T-SHIRT

**MATERIALS**

100% combed organic cotton
160GSM, Single Jersey
Pre-washed textile

SIZES

S-XL


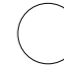


DETAILS

Round neck
Attached collar
Fine ribbed collar
Regular fit

PRICE

WSP **11.10€** net
RRP **29.90€** gross

COLORS

-  black
-  white
-  navy
-  elderberry blend

FITTED RIBBED
COLLAR &
BASIC FIT

T-SHIRT **STYLE IZAAN**

**MATERIALS**

100% combed organic cotton
160GSM, Single Jersey
Pre-washed textile

SIZES

S-XL



STYLE SADHIL T-SHIRT


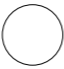




DETAILS

Round neck
Fine ribbed collar
Relaxed fit

PRICE

WSP **11.10€** net
RRP **29.90€** gross

COLORS

-  black
-  white
-  navy
-  bear blend
-  elderberry blend
-  cream blend

**MATERIALS**

100% combed organic cotton
160GSM, Single Jersey
Pre-washed textile

SIZES

S-XL



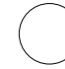

DETAILS

Round neck
Fine ribbed collar
Regular fit

PRICE

WSP **12.90€** net
RRP **34.90€** gross

COLORS

-  black
-  navy
-  white
-  bear blend

BASIC LONGSLEEVED SHIRT **STYLE JERIN**

**MATERIALS**

100% combed organic cotton
260GSM, Heavy Jersey
Pre-washed textile

DETAILS

Round neck
Fine ribbed collar
Overcut shoulders
Oversized Fit

COLORS

-  black
-  white
-  navy
-  birch
-  navy / birch stripes

SIZES

S-XL

OVERSIZED FIT -
HEAVY JERSEY
260GSM

PRICE

WSP **14.80€** net
RRP **39.90€** gross

STYLE BHAJAN**OVERSIZED HEAVY WEIGHT****MATERIALS**

100% combed organic cotton
260GSM, Heavy Jersey
Pre-washed textile

DETAILS

Round neck
Fine ribbed collar
Heavy jersey quality
Relaxed fit

COLORS

-  black
-  white
-  navy
-  birch
-  navy / birch stripes

SIZES

S-XL

LOOSE FIT -
HEAVY JERSEY
260GSM

PRICE

WSP **14.80€** net
RRP **39.90€** gross

T-SHIRT HEAVY**STYLE PRAVIN**


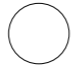


**MATERIALS**

100% combed organic cotton
260GSM, Heavy Jersey
Pre-washed textile

DETAILS

Round neck
Ribbed cuffs
Ribbed cuffs
Regular fit

COLORS

-  black
-  white
-  navy
-  birch

SIZES

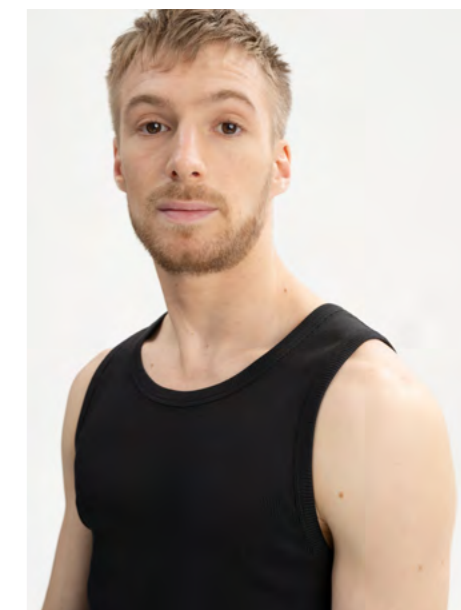
S-XL

PRICE

WSP **18.50€** net
RRP **49.90€** gross

**HEAVY
JERSEY
260GSM**

STYLE TEJAS LONGSLEEVED SHIRT

**MATERIALS**

100% combed organic cotton
2x2 Rib, 280GSM
Pre-washed textile

DETAILS

Round neck
Sleeveless
Bound neckline and armholes
Regular fit

SIZES

S-XL

PRICE

WSP **12.90€** net
RRP **34.90€** gross

**2X2 RIB
WITHOUT
ELASTANE**

COLORS

-  black
-  white
-  pebble blend

RIBBED TANKTOP **STYLE OSHIN**



MEN KNIT

STYLE HIMAL	S. 80
STYLE RAVI	S. 81
STYLE CHARUN	S. 82
STYLE KANJA	S. 83
NEW STYLE VAREEN	S. 84
STYLE UDAI	S. 86
STYLE TAKSH	S. 87
STYLE SHAMIAL	S. 88

**MATERIALS**

100% combed organic cotton
Fine Knit, 12gg
Pre-washed textile

SIZES

S-XL







DETAILS

Round neck
Ribbed cuffs
Regular fit

PRICE

WSP **29.60€** net
RRP **79.90€** gross

COLORS

-  black
-  bear blend
-  pebble blend
-  elderberry blend
-  deep forest blend
-  navy

STYLE HIMAL FINE KNIT JUMPER

**MATERIALS**

100% combed organic cotton
Rib Knit, 7gg
Pre-washed textile

SIZES

S-XL







DETAILS

Round neck
Ribbed cuffs
Regular fit

PRICE

WSP **37.00€** net
RRP **99.90€** gross

COLORS

-  black
-  bear blend
-  elderberry blend
-  brown speckles
-  forest stripes
-  navy

KNIT JUMPER **STYLE RAVI**

**MATERIALS**

100% combed organic cotton
Mittelschwerer Knit, 7gg
Pre-washed textile

DETAILS

Round neck
Ribbed collar, Saum and ribbed cuffs
Mittelschwerer Knit mit leichter Struktur
Regular fit

SIZES

S-XL

PRICE

WSP **33.30€** net
RRP **89.90€** gross

COLORS

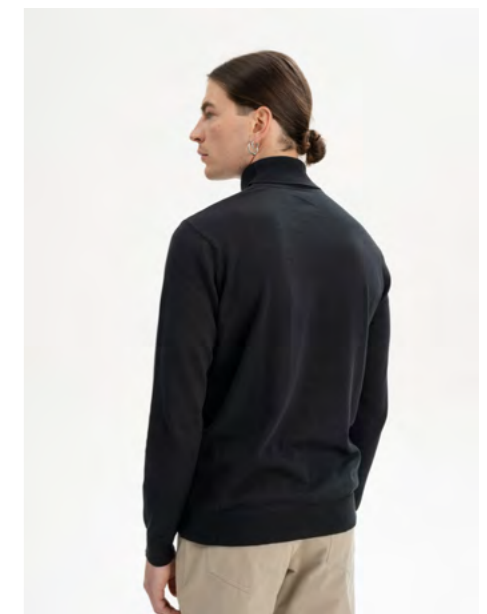
black



bear
blend



deep forest
blend

STYLE CHARUN**KNITPULLOVER****MATERIALS**

100% combed organic cotton
Fine Knit, 12gg
Pre-washed textile

DETAILS

Turtleneck
Ribbed cuffs
Regular fit

SIZES

S-XL

PRICE

WSP **29.60€** net
RRP **79.90€** gross

CO-

black



navy



bear blend

FINE KNIT TURTLENECKPULLOVER**STYLE KANJA**

NEW

PEARL KNIT
STRUCTURE



MATERIALS

100% combed organic cotton
Pearl Knit, 7gg
Pre-washed textile

DETAILS

Round neck
Ribbed collar, cuffs and hem
Pearl knit structure
Regular fit

SIZES

S-XL

PRICE

WSP **37.00€** net
RRP **99.90€** gross

COLORS



black

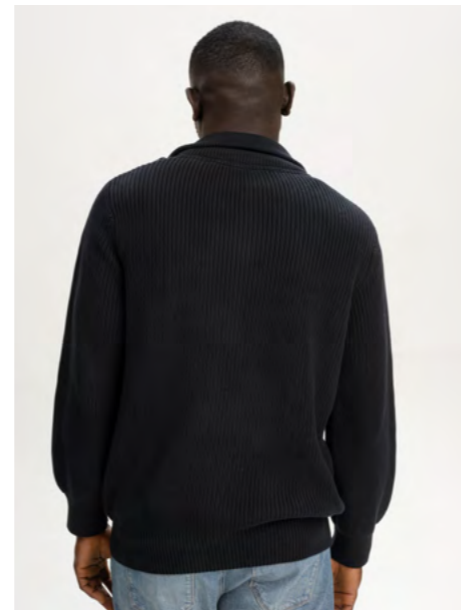


navy



deep forest
blend

NEW

**MATERIALS**

100% combed organic cotton
Rib Knit, 7gg
YKK zipper
Pre-washed textile

DETAILS

Ribbed collar
Ribbed cuffs
Regular fit






SIZES

S-XL

PRICE

WSP **37.00€** net
RRP **109.90€** gross

COLORS

-  black
-  bear blend
-  pebble blend
-  navy
-  dark brown

STYLE UDAI RIB KNIT TROYER

**MATERIALS**

100% combed organic cotton
Rib Knit, 7gg
YKK zipper
Pre-washed textile

DETAILS

High stand-up collar
Ribbed cuffs, collar and hem
Regular fit




SIZES

S-XL

PRICE

WSP **40.70€** net
RRP **109.90€** gross

COLORS

-  black
-  navy
-  bear blend

RIB KNIT ZIP JACKET **STYLE TAKSH**



ACCESSORIES

STYLE RAFI	S. 90
STYLE KALI	S. 91
STYLE LESH	S. 92
STYLE HIMMAT	S. 93
STYLE MEENA	S. 94
STYLE KIRON	S. 95
STYLE NAGNA	S. 96
STYLE ASMEE	S. 98
STYLE DAIVI	S. 99
STYLE DIPTA	S. 100
STYLE RISHI	S. 101

**MATERIALS**

100% combed organic cotton
Rib Knit, 7gg
Pre-washed textile




SIZE

one size

PRICE

WSP **12.90€** net
RRP **34.90€** gross

COLORS

-  black
-  bear blend
-  pebble blend

STYLE RAFI SHORT RIB KNIT BEANIE

**MATERIALS**

100% combed organic cotton
Rib Knit, 7gg
Pre-washed textile






SIZE

one size

PRICE

WSP **12.90€** net
RRP **34.90€** gross

COLORS

-  black
-  bear blend
-  pebble blend
-  elderberry blend
-  deep forest blend

RIB KNIT BEANIE **STYLE KALI**

**MATERIALS**

100% combed organic cotton
Fine Knit, 14gg
Pre-washed textile

DETAILS

Double layer
Variable brim
Soft fine knit
Short Fit

SIZE

one size

PRICE

WSP **12.90€** net
RRP **34.90€** gross

COLORS

-  black
-  bear blend
-  deep forest blend
-  seaweed

STYLE LESH **SHORT FINE KNIT BEANIE**

**MATERIALS**

100% combed organic cotton
Fine Knit, 14gg
Pre-washed textile

DETAILS

Double layer
Variable brim
Soft fine knit
Regular Fit





SIZE

one size

PRICE

WSP **12.90€** net
RRP **34.90€** gross

COLORS

-  black
-  bear blend
-  deep forest blend
-  elderberry blend

FINE KNIT BEANIE **STYLE HIMMAT**

**MATERIALS**

100% combed organic cotton
Rib Knit, 7gg
Pre-washed textile

SIZE

one size




PRICE

WSP **11.10€** net
RRP **29.90€** gross

DETAILS

Looped front
Regular fit

COLORS

-  black
-  navy
-  pebble blend

STYLE MEENA HEADBAND

**MATERIALS**

100% combed organic cotton
Rib Knit, 7gg
Pre-washed textile

SIZE

one size



PRICE

WSP **11.10€** net
RRP **29.90€** gross

DETAILS

Regular fit

COLORS

-  black
-  bear blend

HEADBAND **STYLE KIRON**

**MATERIALS**

100% combed organic cotton
Rib Knit, 7gg
Pre-washed textile





SIZE

Length: 180cm
Width: 45cm

PRICE

WSP **18.50€** net
RRP **49.90€** gross

COLORS

-  black
-  bear blend
-  pebble blend
-  seaweed

STYLE NAGNA**RIB KNIT SCARF**

**MATERIALS**

100% combed organic cotton
Soft Jacquard Knit, 12gg
Pre-washed textile






SIZE

Length: 176cm
Width: 32cm

PRICE

WSP **18.50€** net
RRP **49.90€** gross

COLORS

-  black
-  bear blend
-  pebble blend
-  elderberry blend
-  deep forest blend

STYLE ASMEE**JACQUARD KNIT SCARF****MATERIALS**

100% combed organic cotton
Rib Knit, 14gg
Pre-washed textile

SIZE

Height: 41cm



PRICE

WSP **11.10€** net
RRP **29.90€** gross

DETAILS

Loop to pull over
Lightweight and soft
Regular fit

COLORS

-  black
-  navy

LOOP SCARF**STYLE DAIVI**

**MATERIALS**

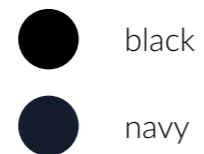
100% combed organic cotton
Rib Knit, 14gg
Pre-washed textile

SIZE

Height: 25cm

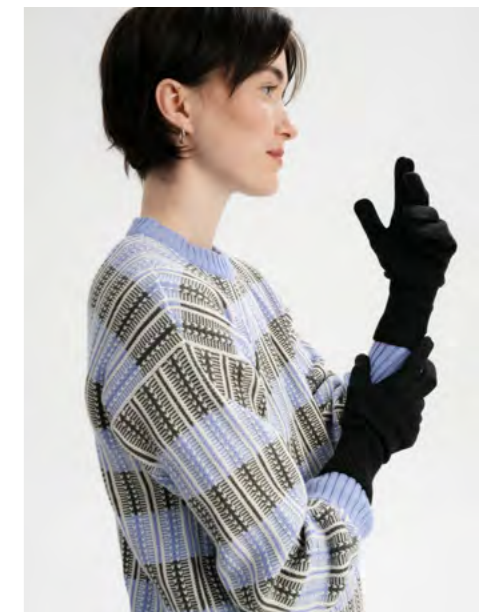
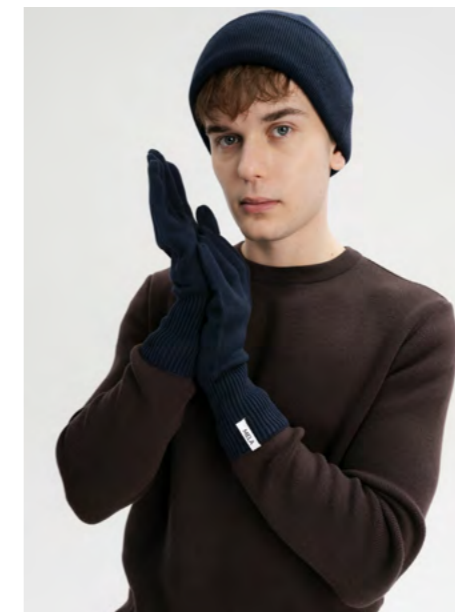
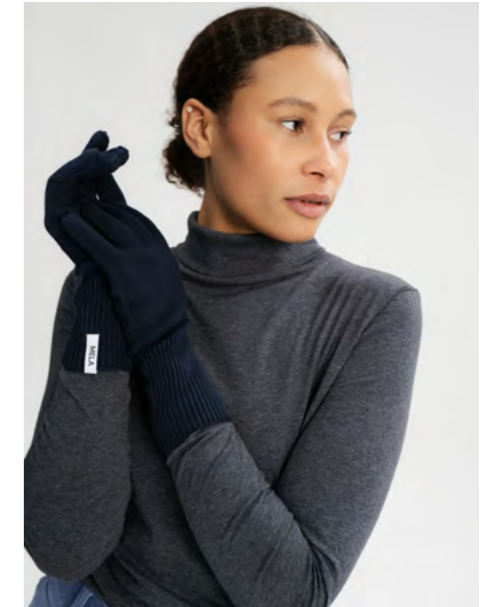
PRICE

WSP **9.20€** net
RRP **24.90€** gross

COLORS**DETAILS**

Thumb hole
Lightweight and soft
Regular fit

STYLE DIPTA WRIST WARMERS

**MATERIALS**

100% combed organic cotton
Fine Knit, 7gg
Pre-washed textile

SIZE

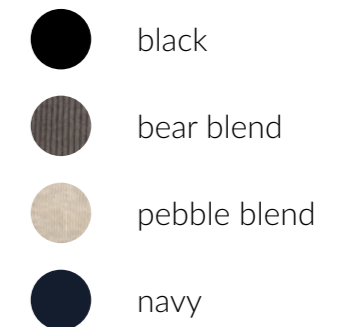
S/M, L

PRICE

WSP **12.90€** net
RRP **34.90€** gross

DETAILS

Finger gloves
Ribbed cuffs
Regular fit

COLORS

KNIT GLOVES **STYLE RISHI**



BAGS & BACKPACKS

STYLE SNEHA	S. 104
STYLE SAANVI	S. 105
STYLE KALINDI	S. 106
STYLE MELA	S. 107
STYLE BHAVIN	S. 108
STYLE PATNI	S. 109
STYLE ANSVAR I	S. 110
STYLE AMAR	S. 112
STYLE ANIL	S. 114
STYLE BALAMANI	S. 116
STYLE MELA X DARIADÉH	S. 118
STYLE MELA II	S. 120
STYLE MELA V	S. 122




**MATERIALS**

100% organic cotton
200GSM, Ripstop
Woven cord
YKK zipper

SIZE

Width: 17cm
Height: 25cm

COLORS

-  black
-  dark olive
-  navy

DETAILS

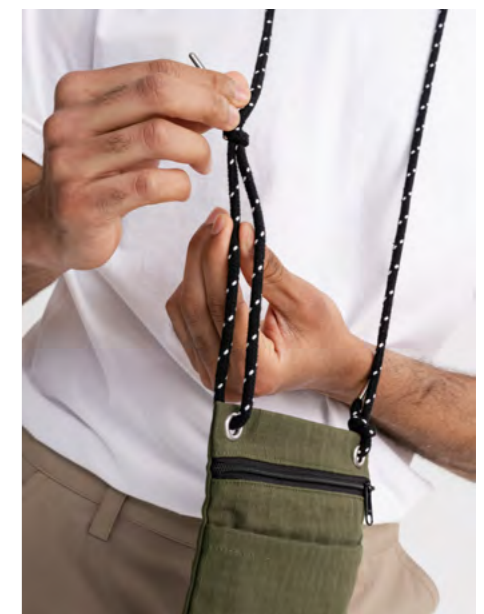
Main compartment with zip
Additional pocket at front
Reflective MELA logo print

PRICE

WSP **14.80€** net
RRP **39.90€** gross

REFLECTIVE
MELA LOGO
PRINT

STYLE SNEHA RIPSTOP BAG




**MATERIALS**

100% organic cotton
200GSM, Ripstop
Woven cord
YKK zipper

SIZE

Width: 14,5cm
Height: 21cm

COLORS

-  black
-  dark olive
-  navy

DETAILS

Main compartment with zip
Additional pocket at front
Reflective MELA logo print

PRICE

WSP **12.90€** net
RRP **34.90€** gross

REFLECTIVE
MELA LOGO
PRINT

RIPSTOP BAG **STYLE SAANVI**




**MATERIALS**

100% organic cotton
200GSM, Ripstop
Cotton shoulder straps
Nickel- and chrome-free buckles
and YKK zipper

SIZE

Width: 31cm
Height: 13,5cm
Depth: 8,5cm
Volume: 3 Liters

COLORS

-  black
-  dark olive
-  navy

DETAILS

Main compartment with zip
Small compartment with zipper
on the back
Reflective MELA logo print

PRICE

WSP **12.90€** net
RRP **34.90€** gross

REFLECTIVE
MELA LOGO
PRINT

STYLE KALINDI RIPSTOP HIP BAG

**MATERIALS**

100% organic cotton
560GSM, Canvas
YKK zipper
Cotton shoulder straps
Nickel- and chrome-free buckles
and YKK zipper

SIZE

Width: 31cm
Height: 13,5cm
Depth: 8,5cm
Volume: 3 Liters

COLORS

-  all black
-  olive green
-  ecru
-  sage
-  light stone
-  shale green

DETAILS

Verstellbarer Schultergurt
Main compartment with zip
Small compartment with zipper
on the back

PRICE

WSP **14.80€** net
RRP **39.90€** gross

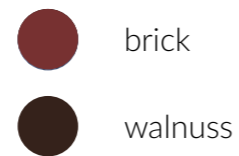
HIP BAG **STYLE MELA**

**MATERIALS**

100% organic cotton
270GSM, Corduroy
Cotton shoulder straps
Nickel- and chrome-free buckles
and YKK zipper

SIZE

Width: 31cm
Height: 13,5cm
Depth: 8,5cm
Volume: 3 Liters

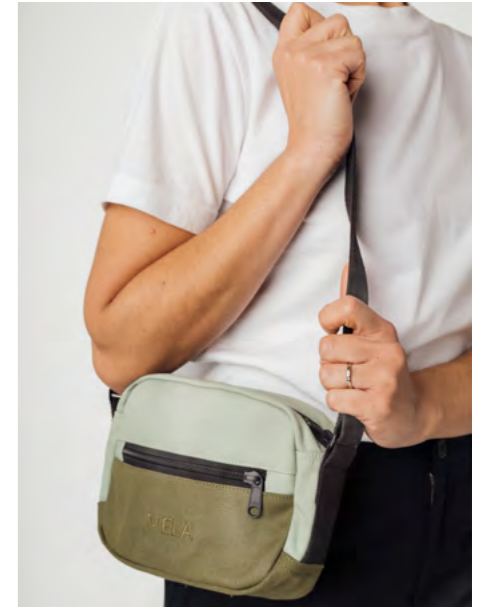
COLORS**DETAILS**

Adjustable shoulder strap
Main compartment with zip
Small compartment with zipper
on the back

PRICE

WSP **12.90€** net
RRP **34.90€** gross

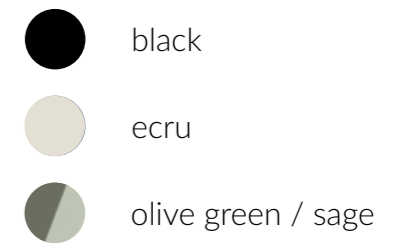
STYLE BHAVIN CORDUROY HIP BAG

**MATERIALS**

100% organic cotton
560GSM, Heavy Canvas,
natürlich wasserabweisend
Cotton shoulder straps
Nickel- and chrome-free buckles
and YKK zipper

SIZE

Volume: 1,8 Liters

COLORS**DETAILS**

Adjustable shoulder strap
Main compartment with zip and
inside pocket
Small compartment with zipper
on the front

PRICE

WSP **14.80€** net
RRP **39.90€** gross

SMALL CROSSBODY BAG **STYLE PATNI**



STYLE ANSVAR I BACKPACK

MATERIALS

Outer fabric: 100% organic cotton
 560GSM, Heavy Canvas: naturally water-repellent
 Inner fabric: 130GSM
 100% cotton straps undyed and unbleached
 Leather vegetable & chrome-free tanned (contains non-textile parts of animal origin)
 Safety buckles: Nickel- and chrome-free
 EVA: Back, bottom, and shoulder padding

DETAILS

Laptop compartment up to 15": extra separated and padded
 Accessory pocket for small items
 Magazine compartment for quick access, water bottle compartment: ideal for 0.5 liters
 Secure zipper compartment thanks to leather flap*
 Extra width shoulder straps
 Adjustable straps without loose ties

* Contains non-textile parts of animal origin (except all black vegan)

SIZE

Width: 28 cm
 Height: 40-56 cm
 Depth: 12 cm
 Volume: 14 + 5 Liters

PRICE

WSP **37.00€** net
 RRP **99.90€** gross

COLORS



black



all black vegan



sand



olive green



nougat



vintage red



STYLE AMAR BACKPACK

MATERIALS

100% organic cotton
 560GSM, Heavy Canvas: naturally water-repellent
 Cotton shoulder straps
 High-quality nickel- and chrome-free buckles and YKK zipper buckles
 EVA rubber (back, bottom, and shoulder padding)

DETAILS

Vegan roll-top bag with expandable zippered
 Laptop compartment in the padded back, fits up to 15"

SIZE



Width: 28 cm
 Height: 41-58 cm
 Depth: 13,5 cm
 Volume: 15 + 5 Liters

PRICE

WSP **37.00€** net
 RRP **99.90€** gross

COLORS

 olive green
 sunflower
 dusty blue

 sand
 burgundy



STYLE ANIL HYBRID BACKPACK

MATERIALS & DETAILS

Organic cotton canvas: 560GSM, naturally water-repellent
 Adjustable, wide organic cotton straps
 High-quality nickel- and chrome-free buckles and YKK zipper adjusters
 Comfortable to carry as a backpack or shoulder bag
 Contrast color details Large main compartment and front pocket with zipper



SIZE

Width: 27 cm
 Height: 42 cm
 Depth: 12 cm
 Volume: 13 Liters

PRICE

WSP **29.60€** net
 RRP **79.90€** gross

COLORS

- black
- nougat
- olive green
- dusty blue



STYLE BALAMANI **BACKPACK**

MATERIALS

100% organic cotton
 560GSM, heavy canvas: naturally water-repellent
 Cotton shoulder straps
 High-quality nickel- and chrome-free buckles and YKK zipper

DETAILS

Laptop compartment from 13" to 15"
 Extra separate accessory pocket for small items such as keys, cell phone, and cosmetics
 Two sizes Adjustable side water bottle pockets
 Secure zippered compartment on the front under the flap
 Extra-wide shoulder straps - great comfort when carrying
 Adjustable straps without loose bands

SIZE

Width: 26 cm
 Height: 37 cm
 Depth: 14 cm
 Volume: 13,5 Liters

PRICE

WSP **37.00€** net
 RRP **99.90€** gross

COLORS



sage

**MATERIALS**

100% organic cotton
560GSM, heavy canvas: naturally water-repellent
Cotton shoulder straps
High-quality nickel- and chrome-free buckles and YKK zipper

DETAILS

Laptop compartment from 13" to 15"
Extra separate accessory pocket for small items such as keys, cell phone, and cosmetics
Two sizes Adjustable side water bottle pockets
Secure zippered compartment on the front under the flap
Extra-wide shoulder straps - great comfort when carrying
Adjustable straps without loose bands

SIZE

Width: 26 cm
Height: 37 cm
Depth: 14 cm
Volume: 13,5 Liters

PRICE

WSP **37.00€** net
RRP **99.90€** gross

COLORS

● black



STYLE MELA II **BACKPACK**

MATERIALS

100% organic cotton
 560GSM, Canvas: naturally water-repellent
 Cotton shoulder straps
 High-quality nickel- and chrome-free buckles and YKK zipper buckles
 EVA rubber (back and shoulder padding)

DETAILS

Zipper to the bottom (front can be opened completely, making packing easier)
 Laptop compartment up to 15" (separate and padded)
 Water bottle compartment (ideal for 0.5 liter bottles)

SIZE

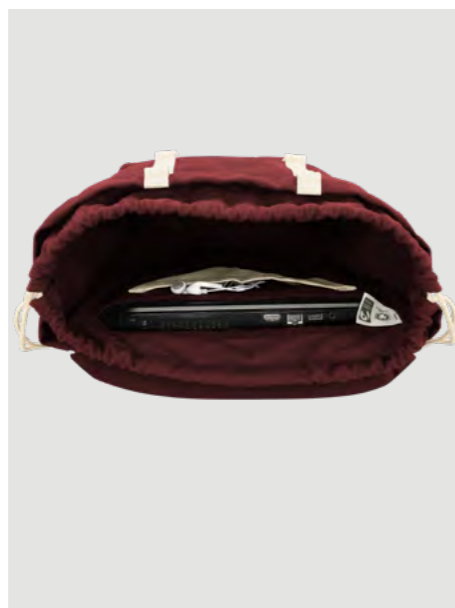
Width: 28 cm
 Height: 39 cm
 Depth: 14 cm
 Volume: 15 Liters

PRICE

WSP **33.30€** net
 RRP **89.90€** gross

COLORS





MATERIALS

Outer fabric: 100% organic cotton
 560GSM, Heavy Canvas: naturally water-repellent
 Inner fabric: 200GSM cotton
 Straps: 100% cotton strap
 Undyed and unbleached Leather*: vegetable-tanned and chrome-free
 Safety buckles: nickel- and chrome-free
 EVA: Back, bottom, and shoulder padding
 YKK zippers

* Contains non-textile parts of animal origin

DETAILS

Laptop compartment up to 15" - separately divided and padded
 Many practical storage options
 Double closure option thanks to drawstring under the flap


SIZE

Width: 29 cm
 Height: 48 cm
 Depth: 15 cm
 Volume: 20 Liters

PRICE

WSP **33.30€** net
 RRP **89.90€** gross

COLORS

 burgundy

 grey



ACCESSORIES & BAGS

PENCIL CASE	S. 126
STYLE SUMIT	S. 127
NEW STYLE VINUSA	S. 128
SMALL POUCH	S. 130
BIG POUCH	S. 131
NEW STYLE PAVEEN	S. 132
STYLE SHAILA	S. 134
STYLE JASMEET	S. 135

**MATERIALS**

100% combed organic cotton
560GSM, Heavy Canvas
YKK zipper

SIZE

Width: 20cm
Height: 5cm
Depth: 5cm
Volume: 0,5 Liters

COLORS

 sand

DETAILS

Large main compartment
with zipper

PRICE

WSP **4.80€** net
RRP **12.90€** gross

PENCIL CASE**MATERIALS**

100% combed organic cotton
560GSM, Heavy Canvas
YKK zipper
100% cotton batting

DETAILS

Practical outside pocket
Embroidered logo on the outside

SIZE

13" inch
Width: 25cm
Height: 35cm
Depth: 2,5cm

15" inch
Width: 28,5cm
Height: 39cm
Depth: 2,5cm

PRICE

13" inch
WSP **11.10€** net
RRP **29.90€** gross


15" inch
WSP **12.90€** net
RRP **34.90€** gross

COLORS

 black

 vintage red

 sunflower

 olive green

 sage

LAPTOP SLEEVE**STYLE SUMIT**

NEW

FILLED WITH
100% COTTON
BATTING

**MATERIALS**

100% combed organic cotton
Heavy Canvas, 560GSM
YKK zipper
Filled with 100% cotton batting

DETAILS

Large main compartment with zipper
Two inner pockets
Mela brand label on the outside

SIZE

13" inch
Width: 25cm
Height: 35cm
Depth: 2,5cm

15" inch
Width: 28,5cm
Height: 39cm
Depth: 2,5cm

PRICE

WSP **14.80€** net
RRP **39.90€** gross

WSP **14.80€** net
RRP **39.90€** gross

COLORS

black

dusty
bluelight
stone**NEW**

STYLE VINUSA PADDED LAPTOP SLEEVE

**MATERIALS**

100% combed organic cotton
Heavy Canvas, 560GSM
YKK zipper

DETAILS

Main compartment with zip

SIZE

Width: 18cm
Height: 12cm

PRICE

WSP **3.70€** net
RRP **9.90€** gross

COLORS

-  greige / blue dots print
-  greige / poppy print
-  greige / green leaf print
-  greige / blue coral print
-  greige / candy grid print

SMALL POUCH**MATERIALS**

100% combed organic cotton
Heavy Canvas, 560GSM
YKK zipper

DETAILS

Large main compartment with
zipper
Two dividers in the main
compartment

SIZE

Width: 23cm
Height: 15cm

PRICE

WSP **5.50€** net
RRP **14.90€** gross

COLORS

-  greige / blue dots print
-  greige / poppy print
-  greige / green leaf print
-  greige / blue coral print
-  greige / candy grid print

BIG POUCH



NEW

FILLED WITH
100% COTTON
BATTING



MATERIALS

100% combed organic cotton
Heavy Canvas, 560GSM
YKK zipper
100% cotton wadding

SIZE

Small	Medium
Width: 18,5cm	Width: 25,5cm
Height: 12,5cm	Height: 14cm
Depth: 6cm	Depth: 9cm

DETAILS

Medium:
Large main compartment with zipper
Five practical inside compartments
Medium allrounder bag for everyday essentials,
with a hanging loop
Mela brand label on the outside

Small:
Large main compartment with zipper
Three practical inside compartments
Small allrounder bag for everyday essentials,
cosmetics or snacks
Mela brand label on the outside

PRICE

Small	Medium
WSP 11.10€ net	WSP 12.90€ net
RRP 29.90€ gross	RRP 34.90€ gross

COLORS

● black
● dusty blue
● light stone

**MATERIALS**

100% combed organic cotton
Heavy Canvas, 560GSM
YKK zipper
Cotton straps

SIZE

Width: 15cm
Height: 13cm
Depth: 9cm
Volume: 1,5 Liters

COLORS

-  greige / black
-  greige / daisy print
-  greige / green grid print

DETAILS

Large main compartment with zipper
Three practical inside compartments
Small allrounder bag for everyday essentials, cosmetics or snacks

PRICE

WSP **5.50€** net
RRP **14.90€** gross

ALL-ROUNDER
FOR DAILY
BASICS &
COSMETICS

STYLE SHAILA ORGANIZER BAG SMALL

**MATERIALS**

100% combed organic cotton
Heavy Canvas, 560GSM
YKK zipper
Cotton straps

SIZE

Width: 20cm
Height: 19cm
Depth: 13cm
Volume: 4,5 Liters

COLORS

-  greige / black
-  greige / daisy print
-  greige / green grid print

DETAILS

Large main compartment with zipper
Three practical inside compartments
Small allrounder bag for everyday essentials, cosmetics or snacks

PRICE

WSP **9.20€** net
RRP **24.90€** gross

ALL-ROUNDER
FOR LUNCH,
COSMETICS, AND
TRAVEL

ORGANIZER BAG MEDIUM **STYLE JASMEET**



SOCKS

BASIC SOCKS	S. 138
RIBBED SOCKS	S. 142
EMBROIDERY SOCKS	S. 146
ROLLHEM SOCKS	S. 150
SNEAKER SOCKS	S. 154



BASIC SOCKS

MATERIALS

97% organic cotton
3% ROICA™ V550

DETAILS

Free from polyester and polyamide
The “Roica” elastane used is biodegradable without releasing harmful substances into the environment
Hand-knitted for a seamless feel
Normal, medium-high fit
With size markings inside the sock cuff

SIZES

EU 35 – 38
EU 39 – 42
EU 43 – 46

PRICE


2 Pack Basic Socks
WSP **5.90€** net
RRP **12.90€** gross

3 Pack Basic Socks
WSP **6.80€** net
RRP **14.90€** gross

5 Pack Basic Socks
WSP **9.00€** net
RRP **19.90€** gross

FREE FROM
POLYAMIDE &
POLYESTER

COLORS

	black		white		navy
	anthracite blend		grey blend		thyme
	cream blend		birch blend		bear blend
	cloudy blue		deep forest blend		elderberry blend
	black / cream blend thin stripes		black / cream blend medium stripes		black / cream blend stripes
	thyme / cream blend thin stripes		deep forest blend / cloudy blue / black bold stripes		deep forest blend / cloudy blue / black stripes
	cloudy / berry / navy / cream blend thin stripes				



2x white



2x black



2x navy



2x anthracite blend



1x deep forest blend
1x thyme



3x white



3x black



1x black
1x anthracite blend
1x navy



1x cream blend
1x bear blend
1x birch blend



1x cream blend
1x thyme
1x thyme stripes



mix forest stripes
1x deep forest blend
1x forest medium stripes
1x forest thin stripes



mix iced berry stripes
1x cloudy blue
1x elderberry blend
1x forest thin stripes



5x white



5x black



mix dark classics
2x black
1x anthracite blend
1x navy
1x grey blend



mix light classics
2x white
1x cream blend
1x grey blend
1x birch blend



mix a lot of black stripes
2x black
1x black / cream stripes
1x black / cream thin stripes
1x black / cream medium stripes



mix winter woods
1x elderberry blend
1x cloudy blue
1x cream blend
1x birch blend
1x deep forest blend



SOCKS

MATERIALS

97% organic cotton
3% ROICA™ V550

DETAILS

Free from polyester and polyamide
The “Roica” elastane used is biodegradable without releasing harmful substances into the environment
Hand-knitted for a seamless feel
Normal, mid-rise fit

SIZES

EU 35 – 38
EU 39 – 42
EU 43 – 46

PRICE

2 Pack Ribbed Socks
WSP **5.90€** net
RRP **12.90€** gross
4 Pack Ribbed Socks
WSP **9.00€** net
RRP **19.90€** gross

COLORS

black



white



dark brown



crocus



pomegranate



thyme



cream blend



birch blend



bear blend



seaweed



elderberry blend

FREE FROM
POLYAMIDE &
POLYESTER

SOCKS



2x white



2x black



2x pomegranate



1x bear blend
1x black



1x birch blend
1x thyme



1x elderberry blend
1x crocus



1x seaweed
1x dark brown



1x birch blend
1x cream blend



4x white



4x black



mix wood berries
1x seaweed
1x elderberry blend
1x crocus
1x pomegranate



mix earthy tones
1x dark brown
1x cream blend
1x bear blend
1x birch blend





MATERIALS

97% organic cotton
 3% ROICA™ V550
 100% cotton backing: Instead of synthetic materials, we use sustainable cotton fleece to reinforce the embroidery, which has a small overlap to prevent waste—without compromising comfort.

DETAILS

Free from polyester and polyamide
 The “Roica” elastane used is biodegradable without releasing harmful substances into the environment
 Hand-knitted for a seamless feel
 Normal, mid-rise fit

SIZES

EU 35 – 38
 EU 39 – 42
 EU 43 – 46

PRICE

1 Pack Embroidery Socks
 WSP **4.50€** net
 RRP **9.90€** gross
 2 Pack Embroidery Socks
 WSP **9.00€** net
 RRP **19.90€** gross
 5 Pack Embroidery Socks
 WSP **15.90€** net
 RRP **34.90€** gross

FREE FROM
 POLYAMIDE &
 POLYESTER

COLORS SAISONAL



cream
blend / candy
cane



dark brown /
gingerbread



dark brown /
mushroom



pomegranate /
Ho Ho Ho



cloudy blue /
snowman



cloudy blue /
dog ski

COLORS ALL YEAR



white /
queen



white /
king



white / bike



white / heart

COLORS GIFT BOX



white /
smiley moods
(5 Pack)



white /
follow heart
(2 Pack)



1x cream blend / candy cane



1x dark brown / gringerbread



1x dark brown / mushroom



1x pomegranate / Ho Ho Ho



1x cloudy blue / dog skii



1x cloudy blue / snowman



1x white / queen



1x white / king



1x white / bike



1x white / heart



2x white / follow heart*



5x white / smiley moods*



* in attractive gift packaging



SOCKS

MATERIALS

97% Organic cotton
3% ROICA™ V550

DETAILS

Free from polyester and polyamide
The "Roica" elastane used is biodegradable without releasing harmful substances into the environment
Hand-knitted for a seamless feel
Normal, mid-rise fit

SIZES

EU 35 – 38
EU 39 – 42
EU 43 – 46

PRICE

2 Pack Roll Hem Socks
WSP **5.90€** net
RRP **12.90€** gross
5 Pack Roll Hem Socks
WSP **9.00€** net
RRP **19.90€** gross

COLORS

black



crocus

deep forest
blendcream
blendbirch /
brown mix

FREE FROM
POLYAMIDE &
POLYESTER

**ROLL HEM SOCKS**

FITS EXTRA
SOFTLY AROUND
THE LEG, THANKS
TO ROLL HEM



2x black



2x cream
blend



2x crocus



1x deep forest
blend



2x birch brown
mix



5x black





SNEAKER SOCKS

SOCKS

MATERIALS

97% Organic cotton
3% ROICA™ V550

DETAILS

Free from polyester and polyamide
The "Roica" elastane used is biodegradable without releasing harmful substances into the environment
Hand-knitted for a seamless feel
Normal, ankle-high fit

SIZES

EU 35 – 38
EU 39 – 42
EU 43 – 46

PRICE

3 Pack Roll Hem Socks
WSP **6.30€** net
RRP **13.90€** gross

6 Pack Roll Hem Socks
WSP **10.00€** net
RRP **21.90€** gross

COLORS



black



white



grey
blend

PACKAGING SIZE



3x black



3x white



3x grey
blend



6x black



6x white

FREE FROM
POLYAMIDE &
POLYESTER

SIZE CHART WOMEN

SIZE	XS	S	M	M	L	XL
EU	34	36	38	40	42	44
Jeans/inch	26	27-28	29	30	31	32-33
chest circumference	82-84	85-87	88-91	92-95	96-99	100-104
waist circumference	66-68	69-71	72-75	76-79	80-83	84-87
hip circumference	97-99	100-102	103-106	107-110	111-114	115-118

SIZE CHART MEN

SIZE	S	M	M	L	XL	XXL
EU	46	48	50	52	54	56
Jeans/inch	30	31	32	33-34	36-38	40
chest circumference	92-95	96-99	100-103	104-107	108-111	112-115
waist circumference	80-83	84-87	88-92	92-96	97-101	102-105
hip circumference	96-98	99-101	102-105	105-108	109-112	113-115

How to measure:

- Chest circumference: Measured at the widest point of the chest.
- Waist circumference: Measured at the narrowest point of the waist, approximately at elbow height.
- Hip circumference: Measured at the widest point of the hips.
- Body size in cm

SIZE CHART BAGS & BACKPACKS

AMAR Volume 15+6 Liters Height 41-58 cm Width 28 cm Depth 13.5 cm	ANIL Volume 13 Liters Height 42 cm Width 27 cm Depth 12 cm	ansvar I Volume 14+5 Liters Height 40-56 cm Width 28 cm Depth 12 cm	BALAMANI Volume 13,5 Liters Height 37 cm Width 26 cm Depth 14 cm
Hip bag Volume 3 Liters Height 13.5 cm Width 31 cm Depth 8.5 cm	BHAVIN Volume 3 Liters Height 13.5 cm Width 31 cm Depth 8.5 cm	Federmäppchen Height 5 cm Width 5 cm Length 20 cm	JASMEET Volume 4,5 Liters Width: 20 cm Height: 19 cm Depth: 13 cm
KALINDI Volume 3 Liters Height 13.5 cm Width 31 cm Depth 8.5 cm	Kosmetiktasche* *klein Height 12 cm Length 18 cm	Kosmetiktasche* *groß Height 15 cm Length 20 cm	MELA II Volume 15 Liters Height 39 cm Width 28 cm Depth 13,5 cm
MELA V Volume 20 Liters Height 48 cm Width 29 cm Depth 15 cm	PATNI Volume 1,8 Liters Height 14 cm Width 19 cm Depth 7 cm	PAVEEN (S) Height 12,5 cm Width 18,5 cm Depth 6 cm	PAVEEN (M) Height 14 cm Width 25,5 cm Depth 9 cm
SAANVI Height 21 cm Width 14.5 cm	SNEHA Height 25 cm Width 17 cm	SUMIT 13" Height 35 cm Width 25 cm Depth 2.5 cm	SUMIT 15" Height 39 cm Width 28,5 cm Depth 2.5 cm
SHAILA Volume 1,5 Liters Width: 15 cm Height: 13 cm Depth: 9 cm	VINUSA 13" Height 35 cm Width 25 cm Depth 2.5 cm	VINUSA 15" Height 39 cm Width 28,5 cm Depth 2.5 cm	

IMPRESSUM

LOOKBOOK

Autumn/Winter 2026

Photography: Fiona Körner & Milan Soremski

Hair & Make-Up: Elisa Koch

mela wear GmbH

Schillerstraße 50-52

34117 Kassel

Germany

wholesale@melawear.de

www.melawear.de

©2025

The lookbook was printed on

PEFCT-certified paper.

All information is provided without guarantee.



MELA